



An Introduction to Qualis Health and HealthInsight

Sharon Hunter Donnelly

SVP Development, Qualis Health and HealthInsight

NAHDO, October 11, 2018

Quick Orientation Today...

- Who is Qualis Health | HealthInsight?
- What do we do?
- Why do we do it?
- How do we do it?
- Are there similar organizations in your states?



Who is Qualis|HealthInsight?

- Merged April 2018 (similar size & mission)
- Private nonprofit organization, originally founded in 1970's at Medicare inception
- ~600 employees
- Offices in: Alabama, Alaska, California (2), District of Columbia, Idaho, Kansas, New Mexico (2), Nevada, Oregon, Utah, Washington (2)



What do we do? Our Population Health Management Services

Healthcare Consulting

- Quality Improvement and Safety
- Practice Transformation
- National Consulting

Health Information Consulting and Analytics

- Medicaid MMIS related
- Health Information Exchange
- Privacy and security
- Private provider consulting
- Community data collaborative
- Private and public reporting

Research

Community Engagement



Our Medicaid/State Population Health Management Services



Care Management

- Utilization Management
 - Medicaid services
 - Workers Comp services
 - Others
- Case Management
 - Medical care
 - Behavioral health care
 - ED super-utilizer



Our Clients

Government

- Federal
 - CMS, HRSA, AHRQ, NIH, SAMSA, ONC, CDC...
- State
 - Departments of Health
 - Medicaid agencies
 - Other health care purchasers
- Counties
 - Health departments
 - Mental health agencies

Private

- Health Improvement Collaboratives
- Health Systems & Providers
- ACOs, Associations
- Foundations
- Taft-Hartley Union Trusts
- Other health care purchasers



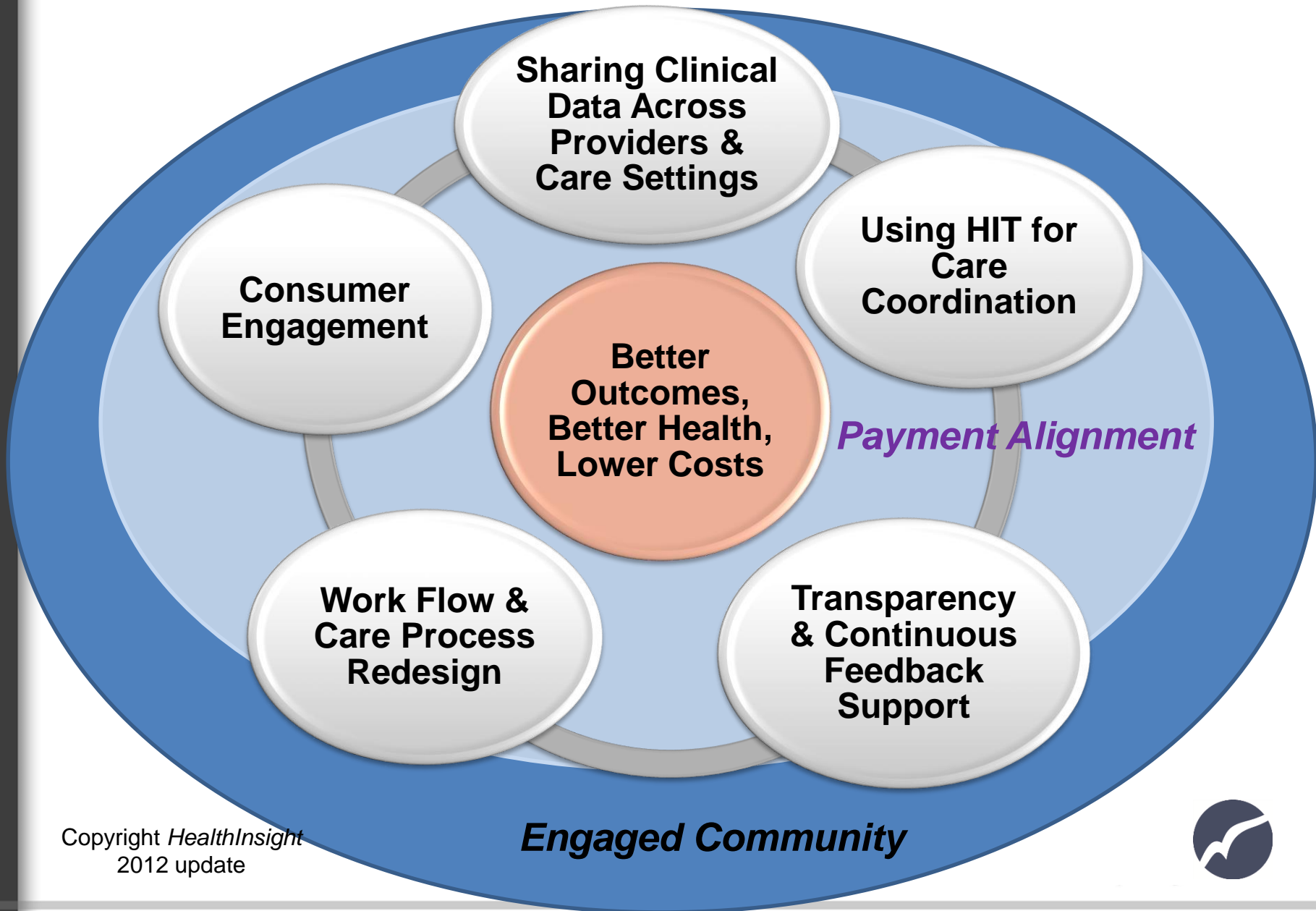
Why do we do it?

Board Direction - Target Outcomes



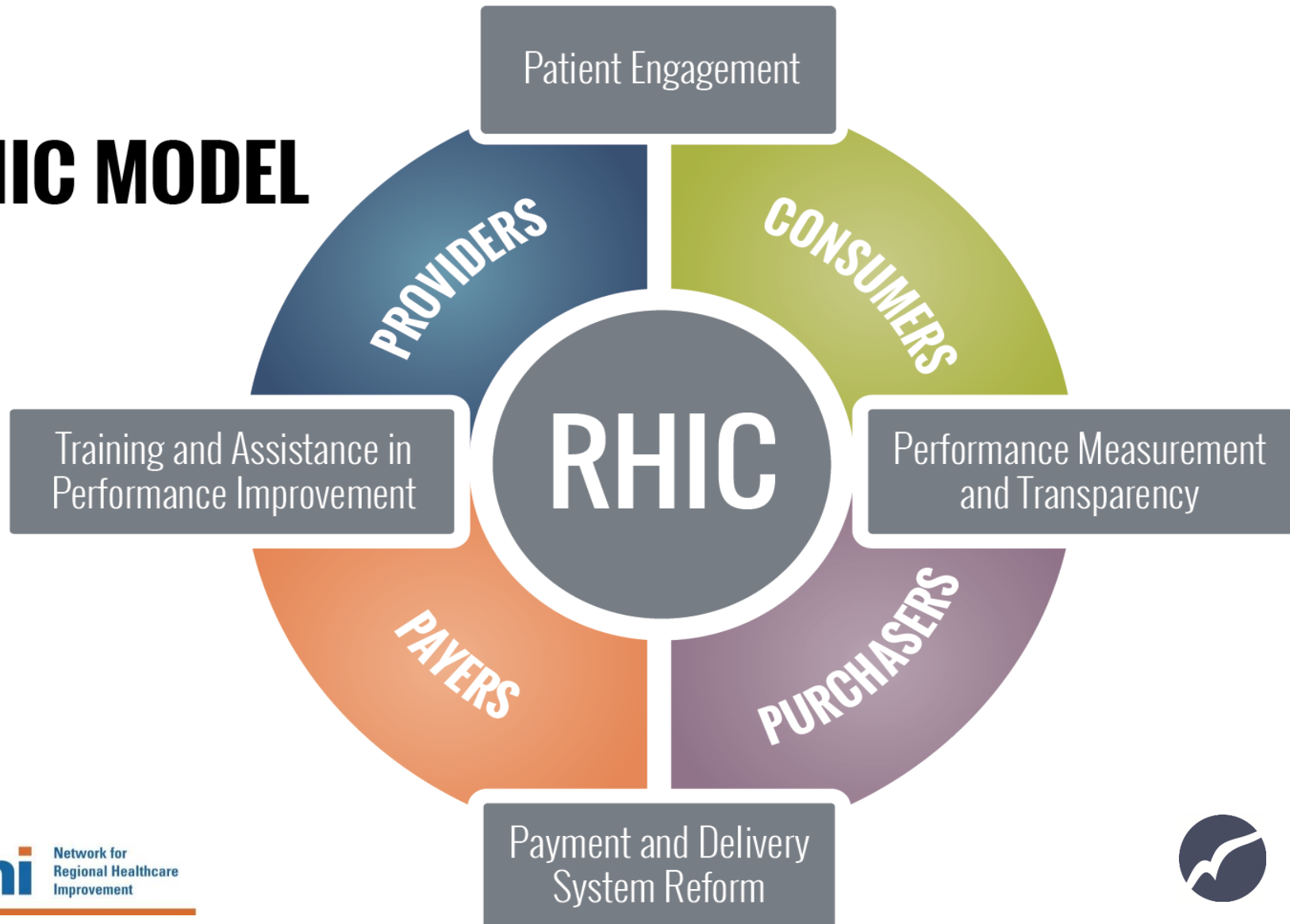
How do we (*try to*) do it?

Levers to Improve System Performance



Community Engagement: Regional Health Improvement Collaboratives

RHIC MODEL



Organizations Similar to Us Near You?

Quality Innovation Network – Quality Improvement Organization (QIN-QIOs)

Find your QIO (in every state/territory):

<https://qioprogram.org/locate-your-qio>

Find RHIC near you:



<http://www.nrhi.org/nhris-members/>

