

ASC X12 Process

Our Thanks to
Jan Root of the Utah Health
Information Network for the use of her
slides.

ANSI

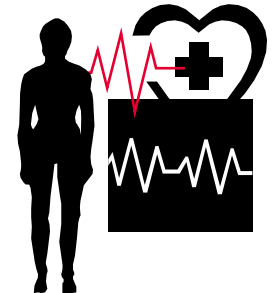
- American National Standards Institute (ANSI)
 - National coordinator for Standards
 - Sets approval process to ensure industry-wide consensus
 - Approves Standards, does not develop them

ASC X12

- Accredited Standards Committee (ASC) X12
 - Develops Standards for electronic interchange of business transactions
 - Mandatory consensus process

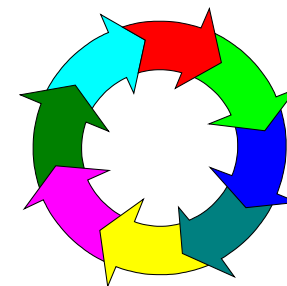
The ASC X12 Standards Integrate Many Industries' EDI Needs

- Education
- Product Data
- Finance
- Government
- Material Management
- Transportation
- Purchasing
- Distribution and Warehousing
- **INSURANCE**



X12 Transactions

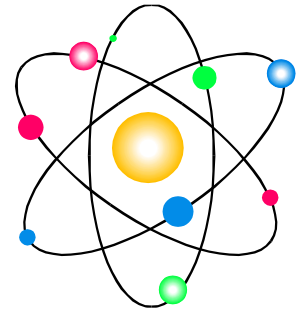
- Name and Address Lists (101)
- Air Shipment Information (104)
- Student Loan Application (135)
- Product Service Notification (143)
- Report of Injury, Illness or Incident (148)
- Electronic Filing of Tax Return Data Acknowledgment (151)
- Business Credit Report (155)
- Real Estate Information Report (262)
- Railroad Mark Register Update Activity (434)
- General Request, Response or Confirmation (814)
- Payment Cancellation Request (829)
- Reservation (Booking Request) (Ocean) (300)
- Patient Information (275)



X12 STANDARDS

Integrated Standard

- Standard includes
 - All transactions, segments, elements, and codes
 - For all industries
- The current “universe” of X12
- New Versions are put out yearly
- 004010 - Approved as of October 1997
- 005010 – Approved as of October 2003



X12 Standards Integrated Standard

- Example: REF Segment

- Specifies type of number

Provider ID

Patient ID

Invoice Number

Contract Number

Case Number

Personal Identification Number (PIN) etc.....

- Gives identification number

- Used in health, shipping, real estate, transportation, applications, scheduling, ordering, banking, warehousing, etc.

What's in a Number?

Implementation Guides

- Developed from the Standard
- Details how a standard used for a specific business purpose
 - All required segments,
 - selected optional segments
 - All required elements,
 - selected optional elements
 - Selected codes



Health Care Claims (837)

Specific Business Purpose

- **Institutional**
 - Hospital
 - Long Term Care
 - Home Health
 - Ambulance
- **Dental**
- **Health Care Service Data Reporting**
 - State Discharge Systems
- **Professional**
 - Primary Care
 - Specialty Care
 - Home Health
 - Long Term Care
 - Ambulance
 - Chiropractic
 - Surgery



Making Changes

- Question: Does change involve a change to the Standard?

- If “NO”  Easy



- If “YES”  More difficult
 - requires a Data Maintenance (DM)
 - consensus

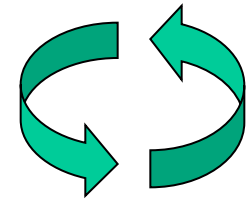
Data Maintenance (DM)

<u>Organizational Level</u>	<u>Example</u>
• Workgroup	WG2 = Health Claims
• Task Group	TG2 = Health Care Ins.
• Subcommittee	X12N = Insurance
• TAS	Technical review
• Full Committee	X12 = All X12 transactions

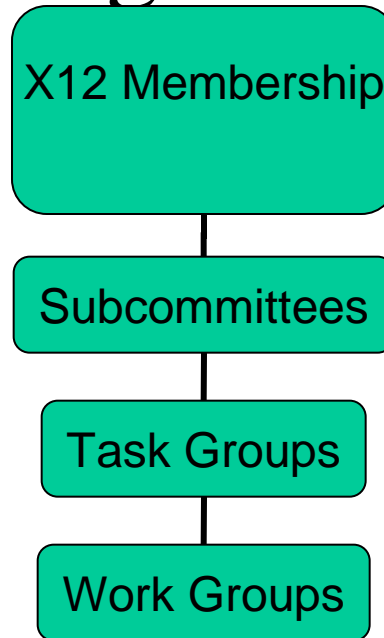


Data Maintenance (DM) Voting Process

- Workgroup vote - develop idea
- Architecture (optional) - polish idea
- Task Group vote - any conflicts w/ health ins?
- Subcommittee vote - any conflicts w/ other ins?
- TAS - any X12 technical conflicts?
- Full Committee ballot - any conflicts w/ other industries?
- If approved, included in next Standard



25,000 foot view of The X12 Organization Chart



The X12 voting process follows the X12 organizational structure.

A more detailed X12 Organizational Chart applicable to changes in health care transactions is available at www.nahdo.org

More Information on X12 Voting

The specifics of making changes to the X12 standards are documented in Standing Document 2 (SD2), which is available by accessing the URL below:

http://www.x12.org/x12org/subcommittees/x12j/J0000_sd2.pdf

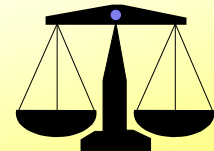


Why Consensus?

- Attempt to reach consensus at all levels
 - Successful EDI depends upon *both* trading partners being satisfied with the transaction

**Data needs must be balanced against
burden of supplying that data**

**COST TO BOTH PARTIES MUST BE
CONSIDERED**



Consensus

- Votes:
 - Approve
 - Approve w/ Comment
 - Disapprove
- DM must respond to ALL comments and disapprovals and attempt to resolve them.

NO



YES