

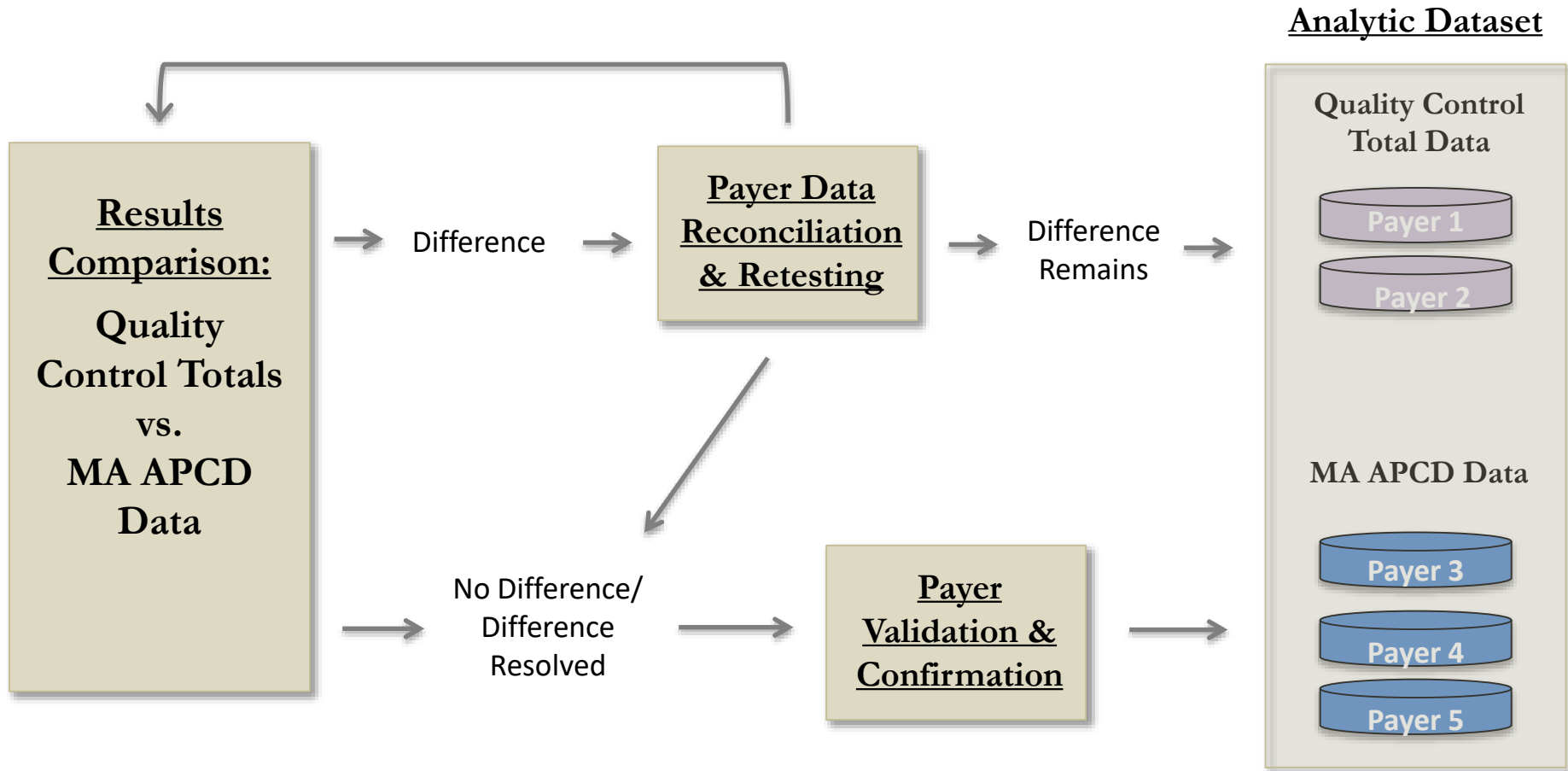


# Using an “Incremental-Source Transition” Approach to Expedite Reliable APCD Reporting

Kevin Casey McAvey

October 26, 2016

# Incremental Source Transition Approach



# Incremental Source Transition Approach: Example

<u>Enrollment Data Sourcing</u> <u>Stage 1: Data Assessment</u>	"ACA Report"	Enrollment Trends
	<i>Direct Payer Totals</i>	<i>MA APCD Totals</i>
MA PAYER 1	1,250,000	800,000
MA PAYER 2	225,000	275,000
MA PAYER 3	400,000	300,000
MA PAYER 4	380,000	385,000

*Example for discussion purposes only.*

Quality Control  
Total Data

# Incremental Source Transition Approach: Example

<u>Enrollment Data Sourcing</u> <u>Stage 1: Data Assessment</u>	"ACA Report"	Enrollment Trends
	<i>Direct Payer Totals</i>	<i>MA APCD Totals</i>
MA PAYER 1	1,250,000	800,000
MA PAYER 2	225,000	275,000
MA PAYER 3	400,000	300,000
MA PAYER 4	380,000	385,000

*Example for discussion purposes only.*

MA APCD Data

# Incremental Source Transition Approach: Example

<u>Enrollment Data Sourcing</u> <u>Stage 2: Reconciliation</u>	"ACA Report"	Enrollment Trends	Difference	
	<i>Direct Payer Totals</i>	<i>MA APCD Totals</i>	#	%
MA PAYER 1	1,250,000	800,000	450,000	36%
MA PAYER 2	225,000	275,000	-50,000	-22%
MA PAYER 3	400,000	300,000	100,000	25%
MA PAYER 4	380,000	385,000	-5,000	-1%

*Example for discussion purposes only.*

Reconciliation

# Incremental Source Transition Approach: Example

<u>Enrollment Data Sourcing</u> <u>Stage 2: Reconciliation</u>	"ACA Report"	Enrollment Trends	Difference		Reporting Readiness
	<i>Direct Payer Totals</i>	<i>MA APCD Totals</i>	#	%	
MA PAYER 1	1,250,000	800,000	450,000	36%	●
MA PAYER 2	225,000	275,000	-50,000	-22%	●
MA PAYER 3	400,000	300,000	100,000	25%	●
MA PAYER 4	380,000	385,000	-5,000	-1%	●

*Example for discussion purposes only.*



Reconciliation

# Incremental Source Transition Approach: Example

Enrollment Data Sourcing Stage 2: Reconciliation	"ACA Report"	Enrollment Trends	Difference		Reporting Readiness	Notes/ Resolution
	Direct Payer Totals	MA APCD Totals	#	%		
MA PAYER 1	1,250,000	800,000	450,000	36%	●	Identified missing host membership
MA PAYER 2	225,000	275,000	-50,000	-22%	●	ME file has SP products flagged as primary
MA PAYER 3	400,000	300,000	100,000	25%	●	Payer accidentally included dental in ACA
MA PAYER 4	380,000	385,000	-5,000	-1%	●	Ready for Payer Confirmation

*Example for discussion purposes only.*

**Reconciliation and  
Issue Identification**

# Incremental Source Transition Approach: Example

Enrollment Data Sourcing Stage 3: Resolution Development	"ACA Report"	Enrollment Trends	Difference		Reporting Readiness	Notes/ Resolution
	Direct Payer Totals	MA APCD Totals	#	%		
MA PAYER 1	1,250,000	800,000	450,000	36%	●	Payer to submit Supplemental Report
MA PAYER 2	225,000	275,000	-50,000	-22%	●	CHIA workaround; payer resubmission
MA PAYER 3	400,000	300,000	100,000	25%	●	Payer to resubmit ACA
MA PAYER 4	380,000	385,000	-5,000	-1%	●	Ready for Payer Confirmation

*Example for discussion purposes only.*

**Reconciliation,**  
**Issue Identification, and**  
**Resolution Development**



# Incremental Source Transition Approach: Example

Enrollment Data Sourcing Stage 4 (or 1): Data Assessment	"ACA Report"	Enrollment Trends	Difference		Reporting Readiness	Notes/ Resolution
	Direct Payer Totals	MA APCD Totals	#	%		
MA PAYER 1	1,250,000	1,180,000	70,000	6%	●	Payer submitted Supplemental Report
MA PAYER 2	225,000	222,000	3,000	1%	●	CHIA workaround; Payer resubmission
MA PAYER 3	307,000	300,000	7,000	2%	●	Payer resubmitted ACA
MA PAYER 4	380,000	385,000	-5,000	-1%	●	Ready for Payer Confirmation

*Example for discussion purposes only.*

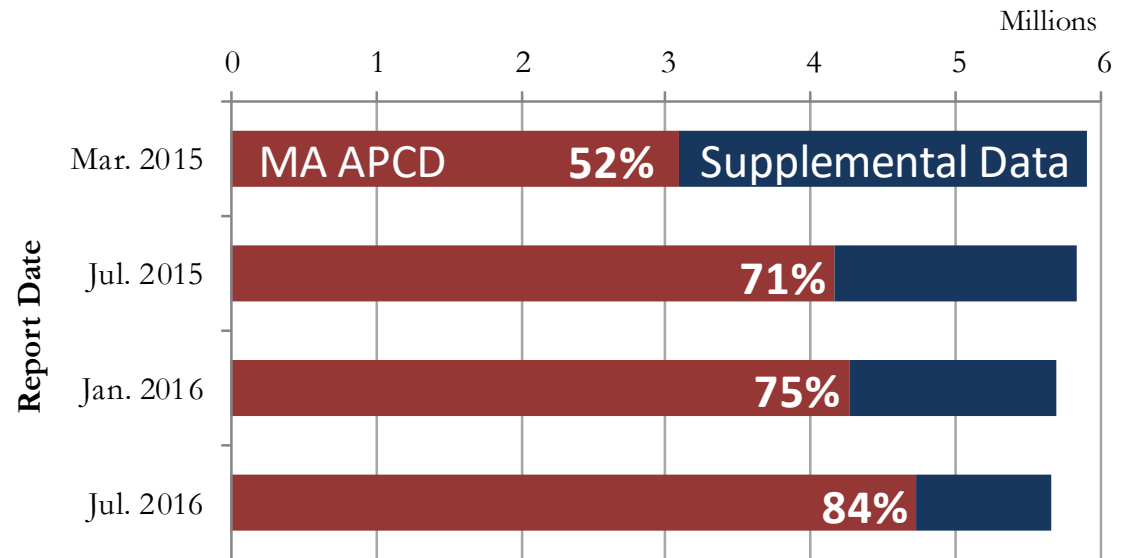
**Reconciliation,**  
**Issue Identification,**  
**Resolution Development &**  
**Implementation, and Retesting**

# Incremental Source Transition Approach: Results

## Benefits

- Facilitates APCD data enhancement & reporting priority-setting
- Provides immediately useful control total data
- Increases payer data quality visibility (and payer motivation to fix data), while providing payers needed clarity around goals.

Massachusetts Commercial + MassHealth Enrollment  
as of June 2014



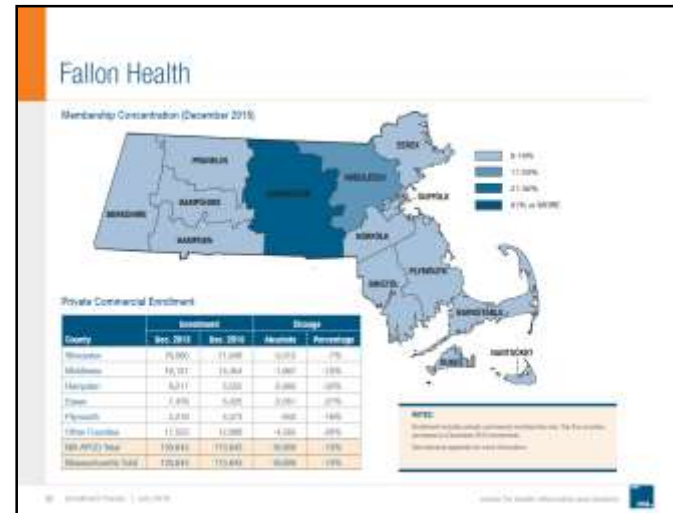
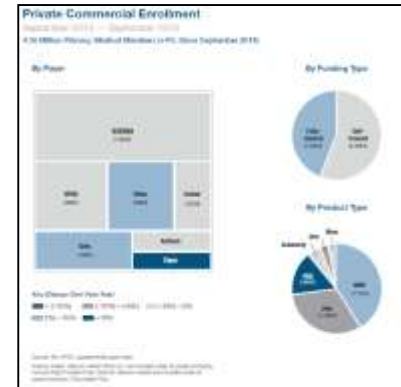
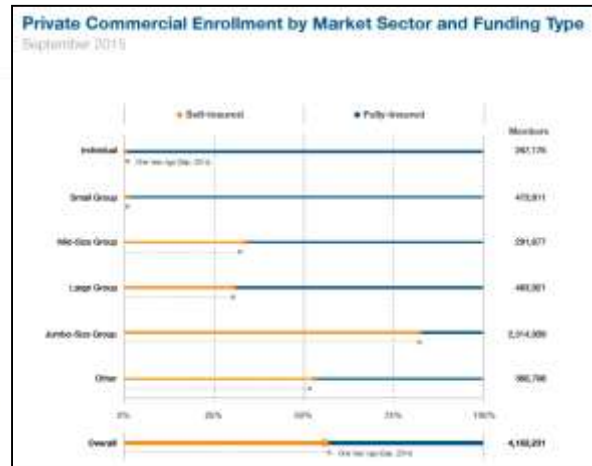
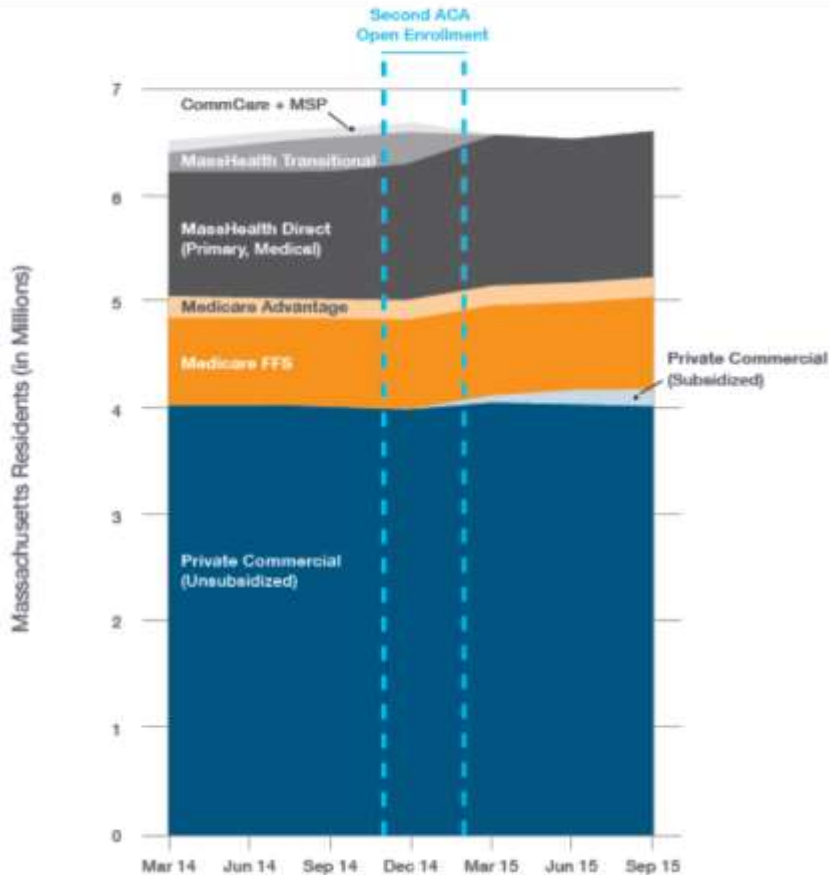
## Outcomes

1. Improvements in APCD data completeness and data accuracy.
2. A more versatile data-sourcing process.
3. Increased capacity to produce richer reports.

# Incremental Source Transition Approach: Results

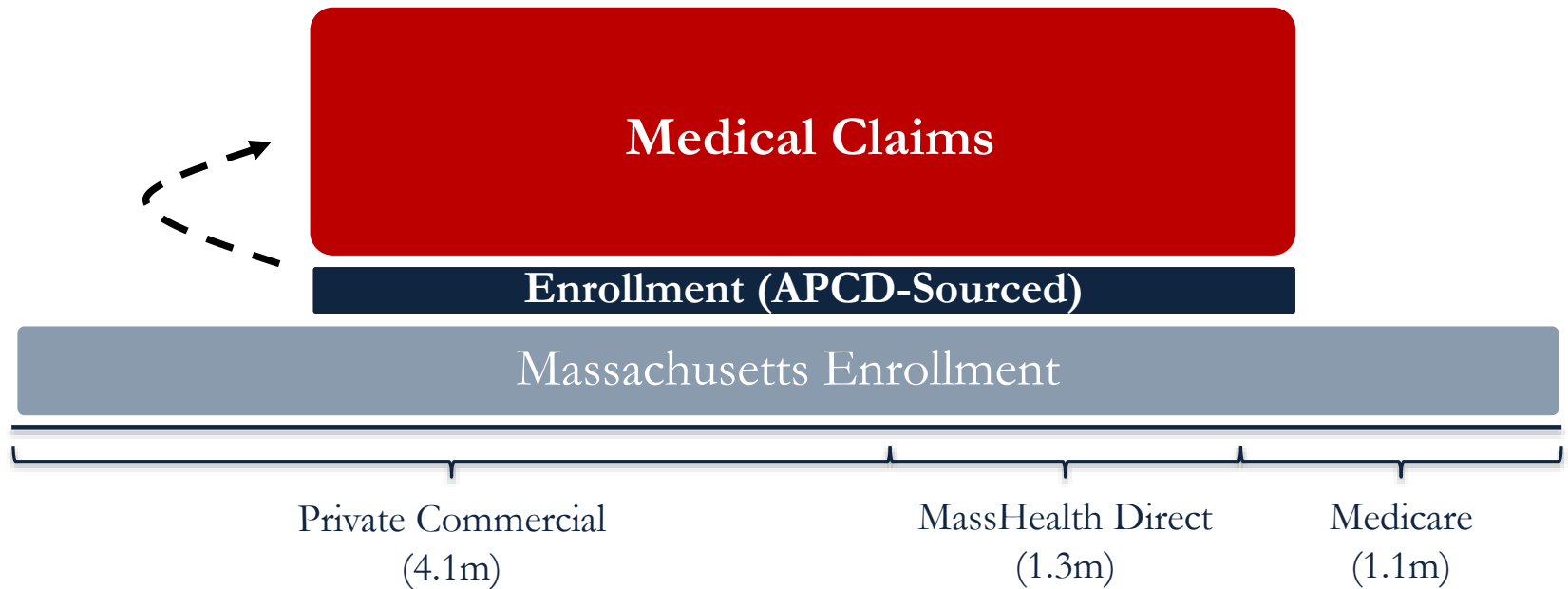
## Total Massachusetts Enrollment

March 2014 — September 2015



<http://www.chiamass.gov/enrollment-in-health-insurance/>

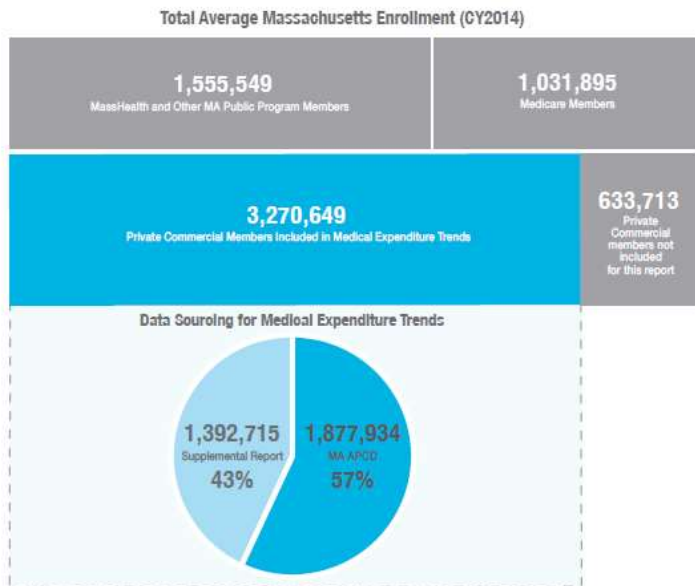
# A Foundation to be Built Upon



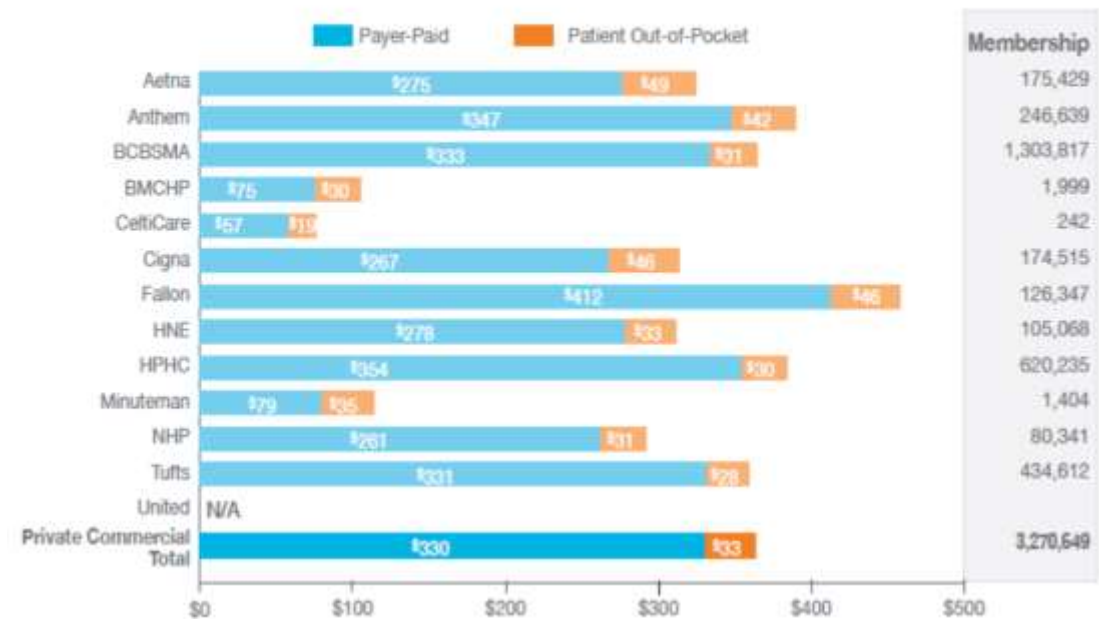
# Transitioning Medical & Pharmacy

## MA APCD Claims Data


### Members Included in Medical Expenditure Trends



### FY2014 Medical Expenditures PMPM By Payer



Dollars and counts are DRAFT  
& for illustrative purposes only



**Kevin Casey McAvey**  
**Associate Director of Analytics**  
**Center for Health Information and Analysis**  
**(617) 701-8237**

[Kevin.McAvey@state.ma.us](mailto:Kevin.McAvey@state.ma.us)

[www.CHIAMass.gov](http://www.CHIAMass.gov)