



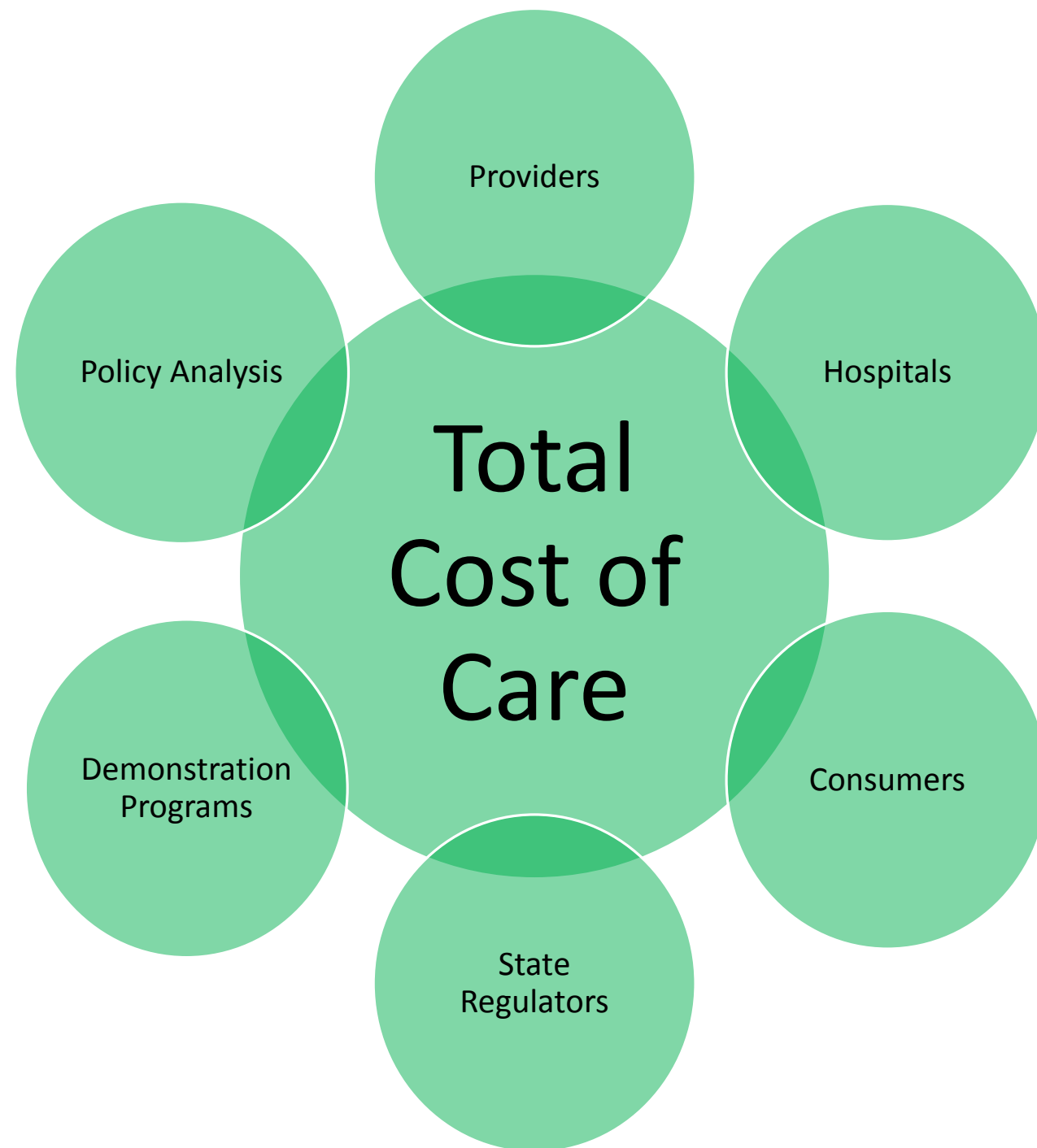
# APCD Use Cases: Measuring “Total Cost”

---

NAHDO CONFERENCE

OCTOBER 30, 2015





# Maryland Insurance Administration Dashboard

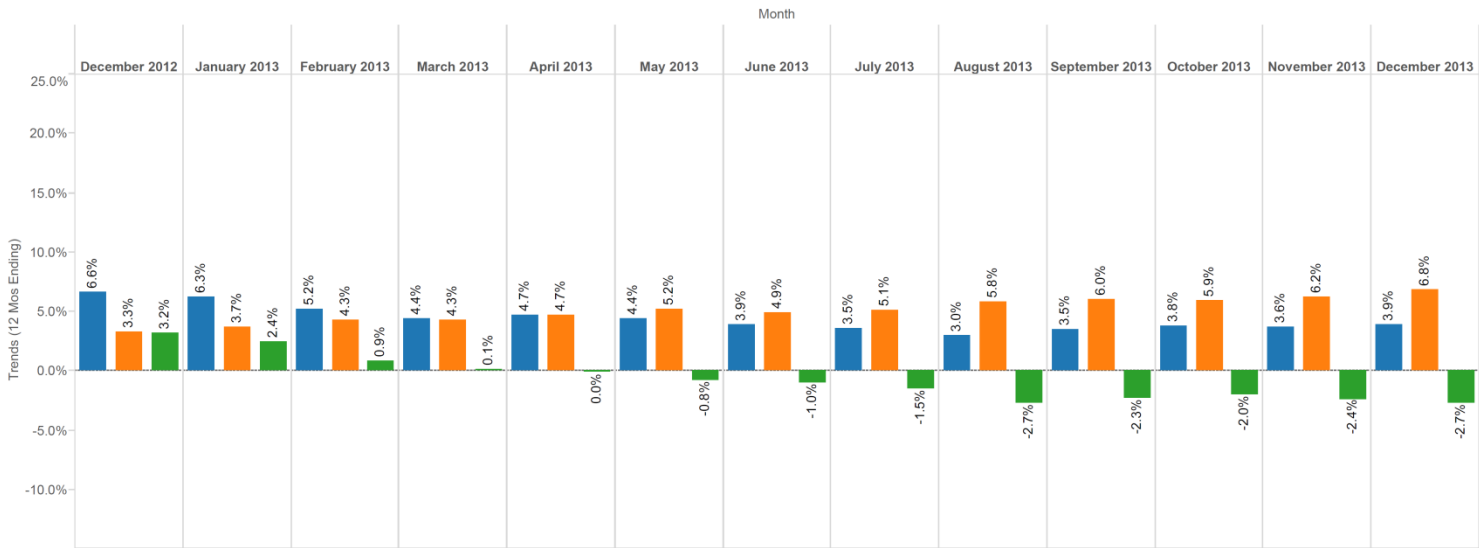
Cover Page	Table of Contents	Enrollment Data Reconciliation	<b>Professional Services 2013</b>	Institutional Services 2013	Prescription Drugs 2013	Total Services 2013	Professional 3-Year Experience	Facility Inpatient 3-Year Experience	Facility Outpatient 3-Year Experience	Pharmacy 3-Year Experience	Total Services 3-Year Experience	Professional Services Claims..
------------	-------------------	--------------------------------	-----------------------------------	-----------------------------	-------------------------	---------------------	--------------------------------	--------------------------------------	---------------------------------------	----------------------------	----------------------------------	--------------------------------

## 2013 Professional Services (12 Mos Ending Allowed PMPM, Utilization, and Cost Trends)

### Professional Services Experience

Month, Year of Month	Mem Count	Allow	Visits	PMPM (12 Mos Ending) along Table (Down)	Visits/1000 along Table (Down)	Unit Cost/Visit Allowed Trends (12 along Table Mos Ending) along Table (Down)	Utiliz Trends (12 along Mos Ending) along Table (Down)	Cost Trends (12 along Mos Ending) along Table (Down)
December 2012	50,174	5,626,556	35,399	\$120.11	9,110	\$158.21	6.6%	3.2%
January 2013	61,812	8,014,842	49,567	\$121.21	9,144	\$159.08	6.3%	3.7%
February 2013	59,475	6,954,942	42,593	\$120.91	9,076	\$159.86	5.2%	4.3%
March 2013	63,234	7,801,829	46,003	\$120.44	8,990	\$160.76	4.4%	4.3%
April 2013	70,552	8,991,597	54,253	\$121.48	9,015	\$161.69	4.7%	4.7%
May 2013	71,571	9,416,412	55,068	\$122.23	9,000	\$162.98	4.4%	5.2%
June 2013	72,959	8,773,187	50,834	\$122.11	8,952	\$163.69	3.9%	4.9%
July 2013	75,314	9,684,549	55,397	\$122.97	8,958	\$164.72	3.5%	5.1%
August 2013	77,235	9,668,154	55,320	\$123.23	8,903	\$166.11	3.0%	5.8%
September 2013	76,151	9,216,130	53,974	\$123.80	8,896	\$167.00	3.5%	6.0%
October 2013	76,107	10,169,544	63,176	\$124.60	8,947	\$167.11	3.8%	5.9%
November 2013	76,442	9,214,862	55,482	\$124.58	8,910	\$167.78	3.6%	6.2%
December 2013	78,266	9,283,559	52,789	\$124.77	8,862	\$168.95	3.9%	6.8%

### Professional Trends



Market  
All

Pname  
Multiple Values

Product  
All

Rate Area  
All

Age Range  
All

Measure Names  
■ Allowed Trends (12 Mos ..  
■ Cost Trends (12 Mos En..  
■ Utiliz Trends (12 Mos En..

# HealthPartners Total Cost of Care

---

- ❑ Network for Regional Health Improvement initiative funded by Robert Wood Johnson Foundation
  - ❑ Five pilot sites and two new sites
  - ❑ Program goal is to develop standardized total cost of care reporting to providers
- ❑ What's unique about the TCoC measure?
  - ❑ National Quality Forum endorsed
  - ❑ Risk Adjustment
  - ❑ Scalable to different population segments
- ❑ Challenges ahead
  - ❑ Measure development
  - ❑ Right-sizing level of information to each audience
  - ❑ Stakeholder engagement

# Forthcoming Initiatives

---

- ☐ Tailoring approach to each audience and use case
- ☐ Insurance Rate Review
  - ☐ Vehicle to data quality improvement
  - ☐ Dashboard refinement
- ☐ Public Reporting – Provider and Consumer Audiences
  - ☐ Engaging stakeholders
  - ☐ Education initiatives
- ☐ Hospital Payment Demonstration Program
  - ☐ Cost-shifting from facilities
  - ☐ Population health management