



**WISCONSIN HEALTH
INFORMATION ORGANIZATION**

Applied Insights: Empowering Self-Service Use of APCD Data



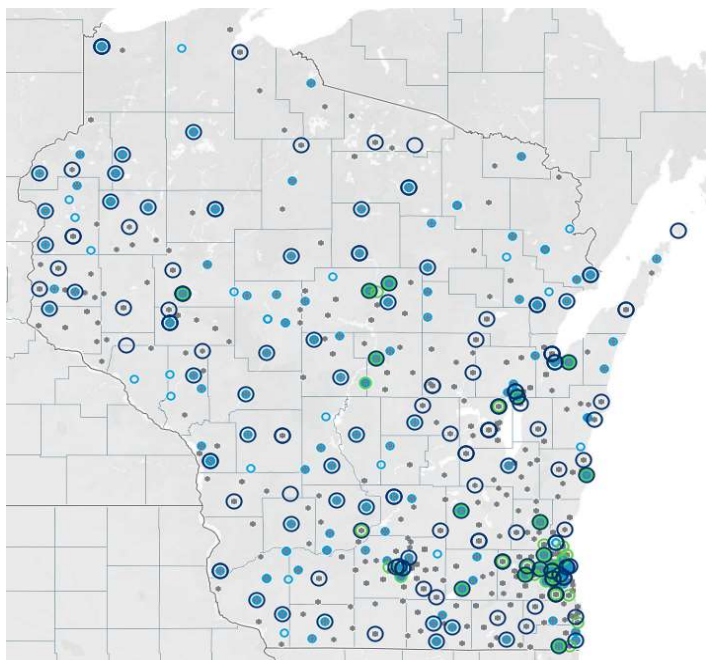
**NAHDO 2020
35th Annual Conference
VIRTUAL**

August 26, 2020

BETTER INFORMATION. BETTER DECISIONS.

Wisconsin Health Information Organization (WHIO)

Mission: To improve the quality and cost efficiency of health care in Wisconsin.



Voluntary, statewide, 501(c)(3) public-private collaboration governed by a voluntary **multi-stakeholder Board of Directors**. **WHIO's revenue is predominately from the private sector.**

- Broad customer base (state agencies, payors, providers, researchers) with a range of capabilities to host and use a statewide de-identified data file.
- Our mid-smaller sized provider organizations have asked, "Can WHIO do the analytics for us?"
- Many health plans also use the Applied Insights reports so that they can use their analytical staff to work on their own priority projects.

Largest source of Wisconsin data and information spanning the continuum of care with about **4.5 Million covered lives**.

How Wisconsin is Unique Among APCDs

- No dominant health plan: 3 national health plans, 10 state or regional health plans (from 6K members to 300K+ members)
- Many self-funded employers; some submit data to WHIO
- About 20% of Wisconsinites are 65 and older; about 20% of the population is on Medicaid
- WI has a few large-medium sized cities/suburban areas, but we are very rural
- Several integrated delivery systems own their own health plan; high quality, high cost health care
- We drink a lot, weigh too much, and eat a lot of beef and cheese



- Secure, Web-based access to pre-built Tableau reports
- Uses: Strategic planning, operational monitoring, market evaluation and business development
- Key user: Chief Medical Officer and/or department manager
- Benefits
 - “IT free” solution; complete product
 - Rapid updates with data refreshes using underlying data summary tables
 - Leverages security model to provide “my organization’s” results compared to state-wide benchmarks

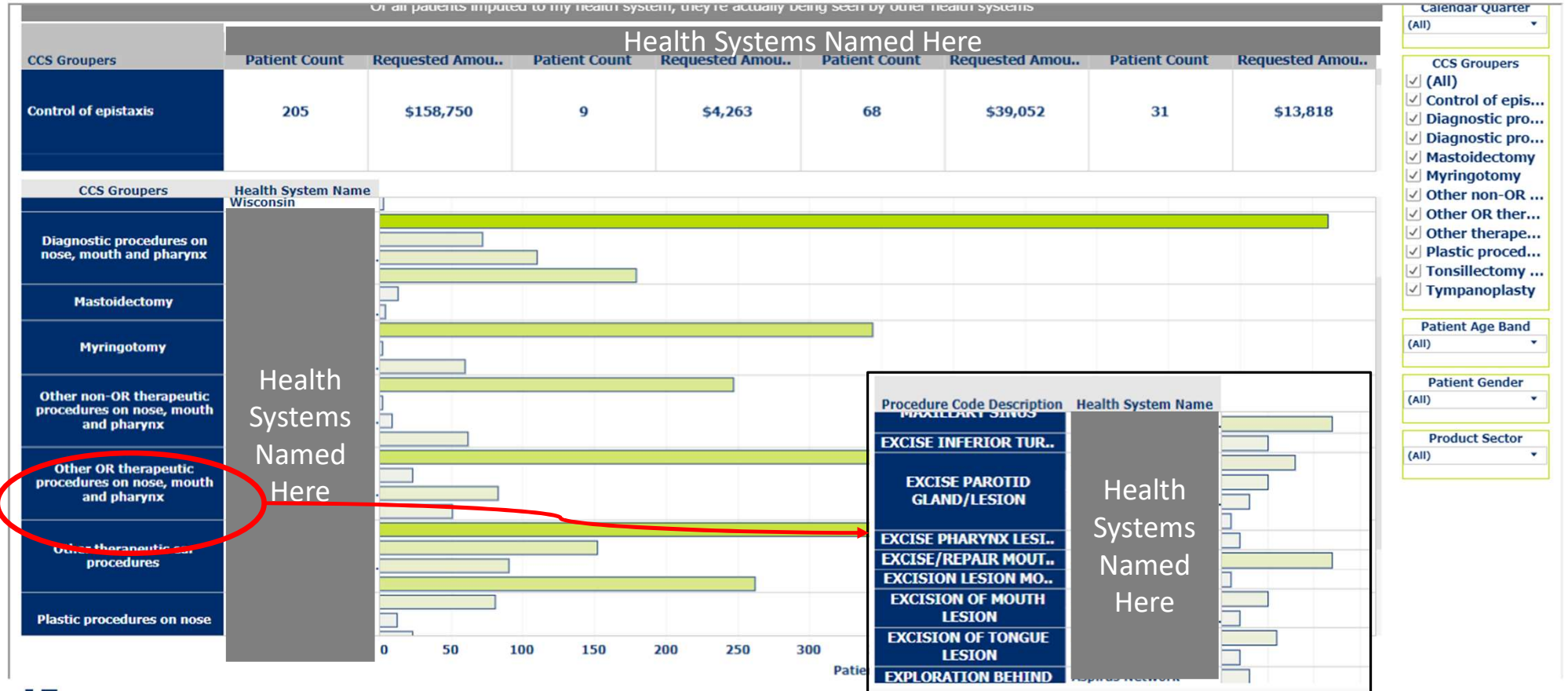


WHIO Value Adds

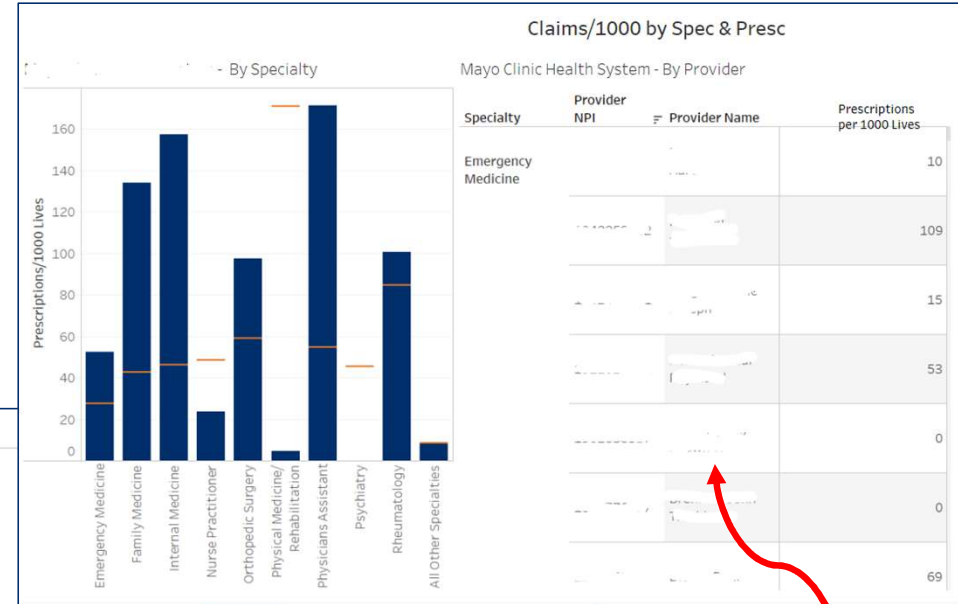
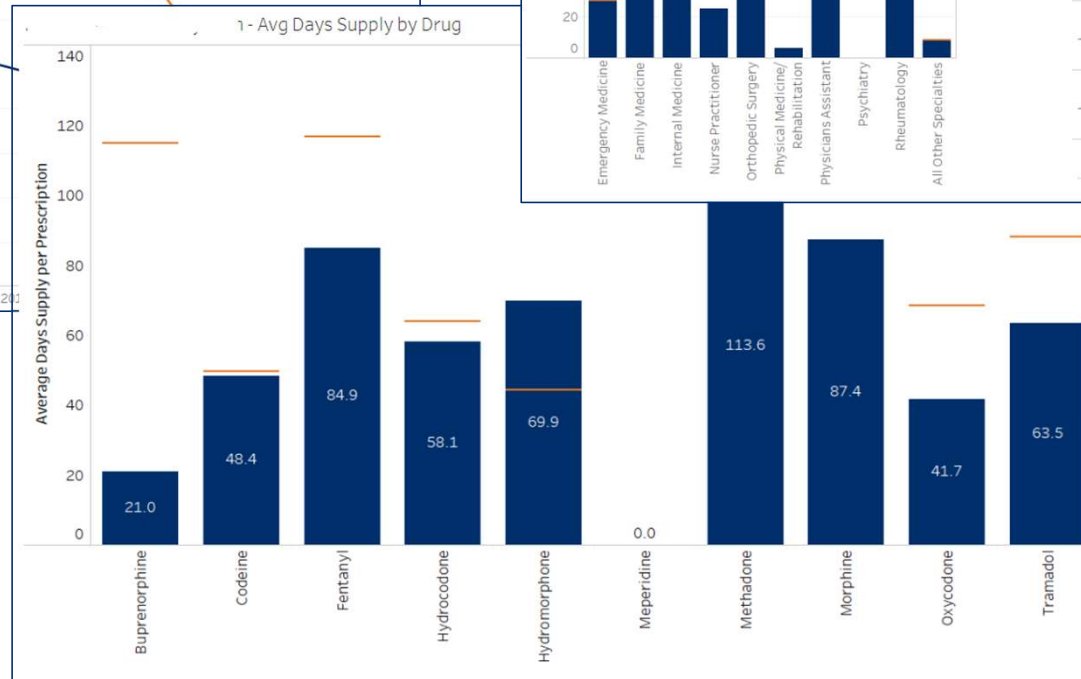
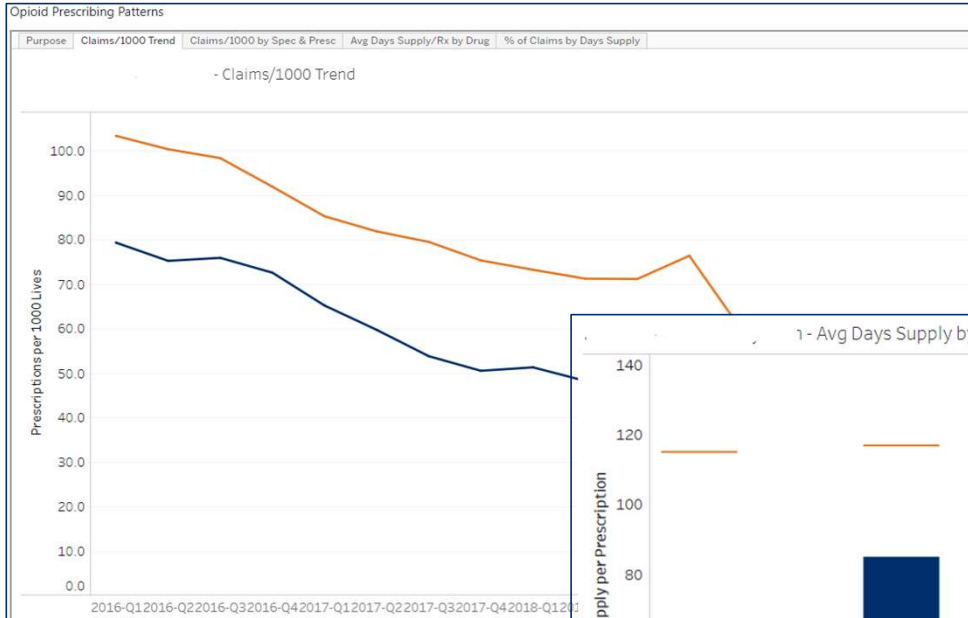
- Ability to unlock “my” data compared to benchmark adds value to otherwise de-identified data
- Standard, commonly-requested filters:
 - Patient demographics and location
 - Procedure code aggregations
 - Drug therapeutic class/group/class aggregations
 - Time period
 - Product sector (Medicaid vs. Commercial vs. Medicare Advantage)
- Regularly scheduled, “hands free” data refreshes – no IT involvement

Health System Outmigration – ENT Example

Outmigration Patterns



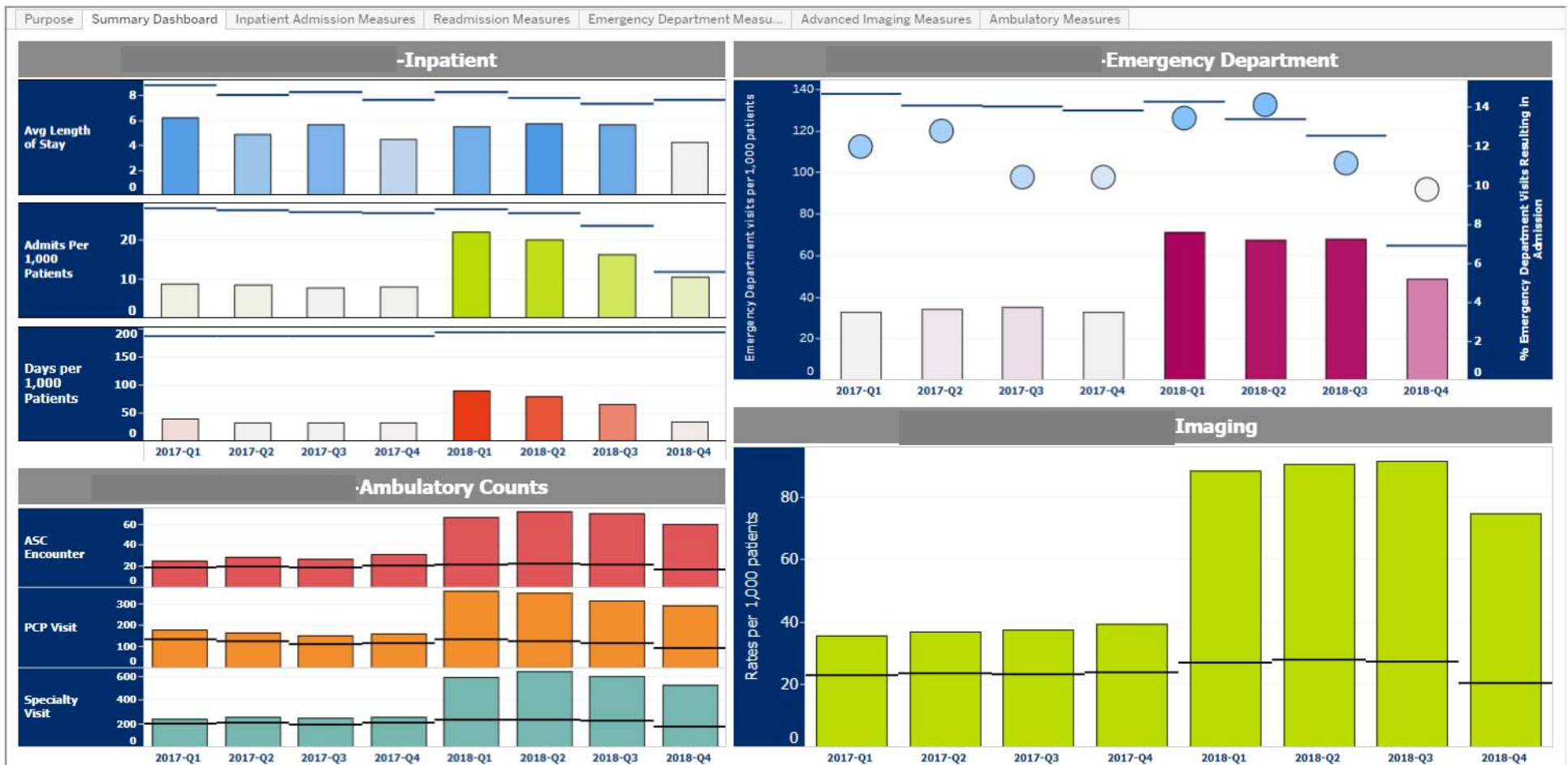
Opioid Prescribing Patterns



Specialty	Provider NPI	Provider Name	Prescriptions per 1000 Lives
Emergency Medicine			10
			109
			15
			53
			0
			0
			69

“My” individual clinician here

Key Performance Indicators with Benchmarks



Population Explorer

Population Analyzer

* Required

Type* Population*

Product Sector* Year*

Quarter*

Asthma
Breast Cancer
Colorectal Cancer
Diabetes
COPD
Hypertension
Lung Cancer
Opioid Abuse

File Description	Population	Product Sector	Year	Quarter	# of Records	File
Medical File	Diabetes	Commercial	2019	Q2	526044	MS Access File

Thank you!



**WISCONSIN HEALTH
INFORMATION ORGANIZATION**

WHIO.org
Or contact us at info@whio.org

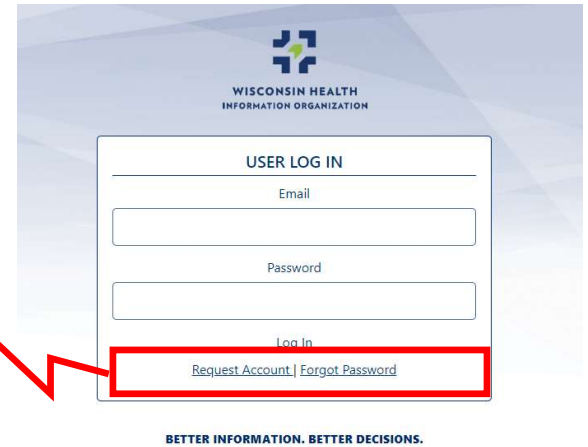
Appendix Slides for Later Viewing

Applied Insights Web Portal

- Log in screen, password reset
- Landing page menu



- Open and close menu
- Announcement bar
- Customer support



Reports Documentation



Health Plan Reports

Population Analyzer

Helpful Documents

Customer Support

Help

File Name	Date	Actions
WHIO Report Specification Document - Potentially Avoidable Care by Provider.pdf	07/09/2019	
WHIO Report Specification Document - Potentially Avoidable Care by Health Plan.pdf	07/09/2019	
WHIO Report Specification Document - Population Analyzer.pdf	07/09/2019	
WHIO Report Specification Document - Pharmacy Utilization by Provider.pdf	07/09/2019	
WHIO Report Specification Document - Pharmacy Utilization by Health Plan.pdf	07/09/2019	
WHIO Report Specification Document - Outmigration Patterns.pdf	07/09/2019	
WHIO Report Specification Document - Market Share.pdf	07/09/2019	
WHIO Report Specification Document - Key Performance Indicators by Provider.pdf	07/09/2019	
WHIO Report Specification Document - Key Performance Indicators by Health Plan.pdf	07/09/2019	





Health Care Provider Reports

Key Performance Indicators

Examine important utilization metrics focused on inpatient care, emergency department services, advanced imaging and professional services in a comprehensive view with your organization's performance compared to Wisconsin benchmarks.

Pharmacy Utilization

Deep dive into WHIO's pharmacy information to compare your organization's performance against Wisconsin benchmarks for medication use and charges. This report also includes information on high cost medication use associated with select diagnoses.

Market Share

Choose a geographic boundary and identify the distribution of services by health care providers in that area. See volume by patient count or total charges for inpatient and ambulatory care treatments.

Potentially Avoidable Care

Identify your organization's rates versus Wisconsin benchmarks for potentially avoidable care such as medical imaging and conditions for which treatment alternatives exist.

Outmigration Patterns

View the care location patterns of your primary care physician's patients, including care received outside of your organization. Alternatively, examine the degree to which your organization is capturing the full spectrum of care provided for high interest surgical procedures.

Opioid Prescribing

Compare your organization's opioid prescribing patterns compared to Wisconsin benchmarks. Includes prescribing habits of individual physicians compared to peer group benchmarks for specialties that prescribe the most opioids.

Population Analyzer

Leverage pre-built, state-wide populations to create your own de-identified record sets for analysis in your technical environment. High interest populations include diabetes, chronic obstructive pulmonary disease, hypertension, asthma, oncology and opioid abuse.



Health Plan Reports

Key Performance Indicators

Examine important utilization metrics focused on inpatient care, emergency department services, advanced imaging and professional services in a comprehensive view with your organization's performance compared to Wisconsin benchmarks.

Pharmacy Utilization

Deep dive into WHIO's pharmacy information to compare your organization's performance against Wisconsin benchmarks for medication use and charges. This report also includes information on high cost medication use associated with select diagnoses.

Member Risk – Future Report

Compare the clinical risk of your member panel to Wisconsin benchmarks to facilitate early intervention programs and care management strategies.

Potentially Avoidable Care

Identify your organization's rates versus Wisconsin benchmarks for potentially avoidable care such as readmissions, medical imaging and antibiotic use. This report also provides service rates compared to Wisconsin benchmarks for conditions for which treatment alternatives exist.

Population Analyzer

Leverage pre-built, state-wide populations to create your own de-identified record sets for analysis in your technical environment. High interest populations include diabetes, chronic obstructive pulmonary disease, hypertension, asthma, oncology and opioid use.

WHIO's Product and Service Offerings

